

Drawings and Specifications as instruments of service are and shall remain the property of the Architect. They are not to be used on extensions of the project, or other projects, except by agreement in writing and appropriate compensation to the Architect.

The General Contractor is responsible for confirming and correlating dimensions at the job site. The Architect will not be responsible for construction means, methods, techniques, sequences, or procedures, or for safety precautions and programs in connection with the project.

© RT STUDIO, LLC
**NOT FOR
REGULATORY
APPROVAL,
PERMITTING, OR
CONSTRUCTION**

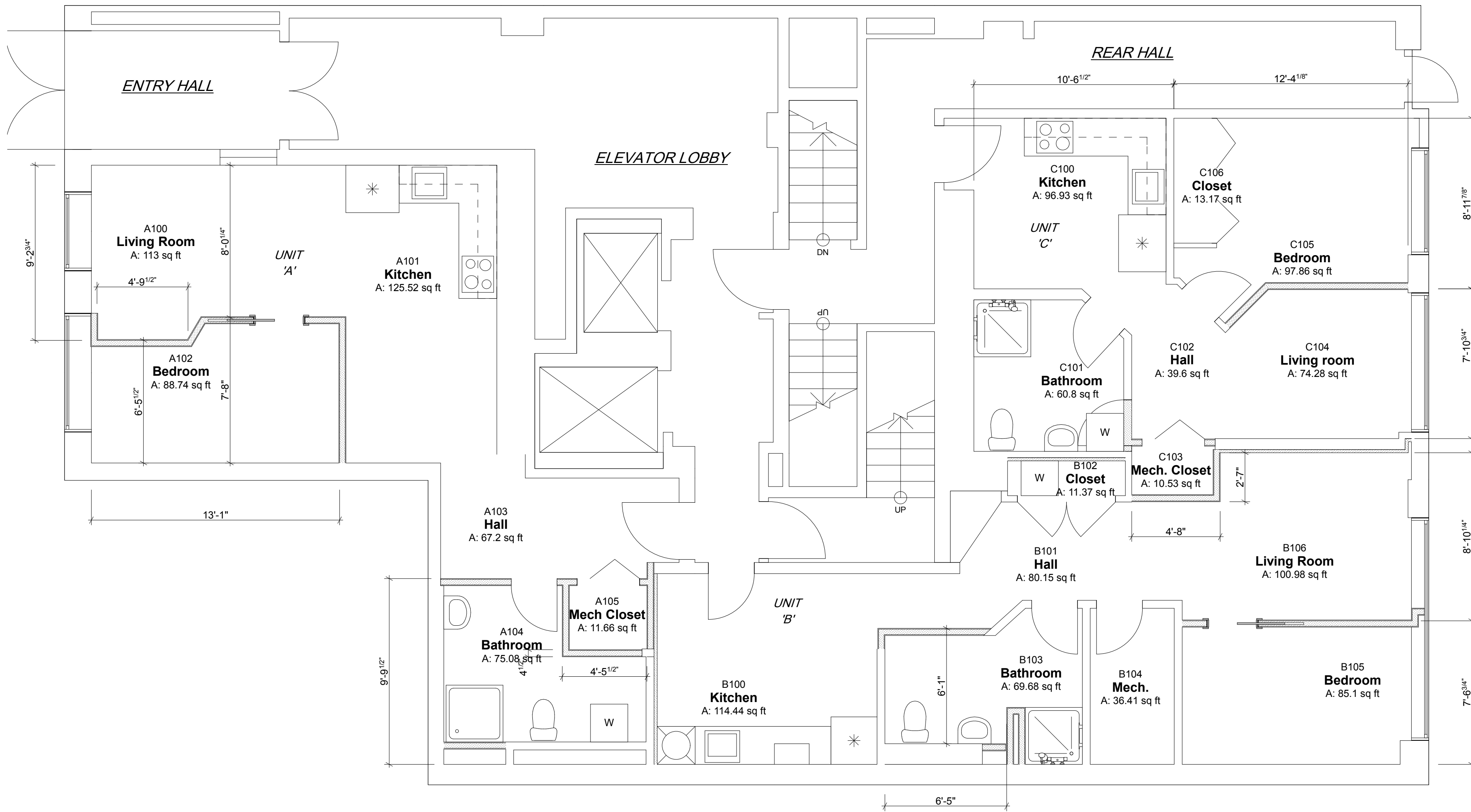
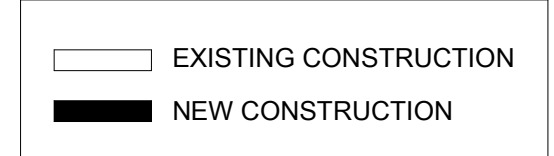
I STREET APARTMENTS
2405 I STREET, NW WASHINGTON
DISTRICT OF COLUMBIA 20037

ISSUED:

Floor Plan

A101

Board of Zoning Adjustment
District of Columbia
Case No. Z-2016-0007
Printed: 05/20/16
EXHIBIT NO. 6



1
A101 Proposed Plan
SCALE: 1/4" = 1'-0"